



SM480V

SMAN™ Refrigerant Manifolds with Micron Gauge

SM480V, SM380V

Knowledge, power and experience are packed into the newly designed SMAN™ Refrigerant Manifolds. Years of feedback from A/C and refrigeration specialists is combined with Fieldpiece's laser focus on continuous improvement to bring you the toughest, most advanced digital refrigerant manifold on the market.



Simply Strong

- Beefy hook
- Water resistant (IP54)
- Impact resistant case
- 3 Protected thermocouple jacks
- Built-in micron gauge
- 3/8" VAC port (SM480V only)



Included

- SM380V or SM480V SMAN Refrigerant Manifold
- (2) TC24 Type K pipe clamp thermocouples
- (1) ATA1 Type K bead thermocouple w/Clip
- (1) ANC11 Padded drawstring case



SM480V



SM380V

Packed with Knowledge

The SM380V and SM480V are designed to work the way you do with advanced features to streamline your job and provide your customers with the answers they need.

Data Logging

- Stores up to 9 jobs internally
- Easy download via USB port
- Displays % free storage space before logging begins
- Logs up to 7 days (168 continuous hours)

Tightness Test

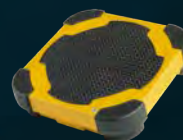
- Check for leaks after repairs or installations
- View pressure differential over time
- Timer tracks duration of test
- Temperature compensated with SL temp to avoid false positives

Customizable

- Adjust auto power off duration
- Adjust back light duration
- Set high and low vacuum alarms
- Automatically favorite your last 10 refrigerants

Wireless Integration with Job Link® System Tools

- Live pipe and air temps with Job Link probes
- Monitor refrigerant weight directly on manifolds using SRS3 scale
- View measurements on SMAN and/or in Job Link App
- Direct 350' wireless range (no transmitter needed)



SRS3 Wireless Scale



JL3RH



JL3PC



SM480V

SMAN™ Refrigerant Manifolds with Micron Gauge

SM480V, SM380V

Knowledge, power and experience are packed into the newly designed SMAN™ Refrigerant Manifolds. Years of feedback from A/C and refrigeration specialists is combined with Fieldpiece's laser focus on continuous improvement to bring you the toughest, most advanced digital refrigerant manifold on the market.

Simply Strong

- Beefy hook
- Water resistant (IP54)
- Impact resistant case
- 3 Protected thermocouple jacks
- Built-in micron gauge
- 3/8" VAC port (SM480V only)

Included

- SM380V or SM480V SMAN Refrigerant Manifold
- (2) TC24 Type K pipe clamp thermocouples
- (1) ATA1 Type K bead thermocouple w/clip
- (1) ANC11 Padded drawstring case



SM480V



SM380V

Packed with Knowledge

The SM380V and SM480V are designed to work the way you do with advanced features to streamline your job and provide your customers with the answers they need.

Data Logging

- Stores up to 9 jobs internally
- Easy download via USB port
- Displays % free storage space before logging begins
- Logs up to 7 days (168 continuous hours)

Tightness Test

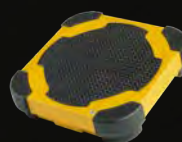
- Check for leaks after repairs or installations
- View pressure differential over time
- Timer tracks duration of test
- Temperature compensated with SL temp to avoid false positives

Customizable

- Adjust auto power off duration
- Adjust back light duration
- Set high and low vacuum alarms
- Automatically favorite your last 10 refrigerants

Wireless Integration with Job Link® System Tools

- Live pipe and air temps with Job Link probes
- Monitor refrigerant weight directly on manifolds using SRS3 scale
- View measurements on SMAN and/or in Job Link App
- Direct 350' wireless range (no transmitter needed)



SRS3 Wireless Scale



JL3RH



JL3PC

Digital Micron Vacuum Gauge

SVG3

Easy to use and built tough to handle day-to-day use in the field.

- Rate indicator
- Schrader depressor
- 1 Micron resolution
- 0 – 9999 Micron range
- Alarms and stopwatch



Digital Vacuum Micron Gauge

AVG2 - Accessory Head

Displays vacuum pressure with resolution of 1 micron.

- Range: 50 to 2000 microns
- Resolution: 1 micron
- Accuracy (@~75°F): ±10%, 0-1000 microns
- Fitting: 1/4" flared brass fitting (male)
- "T" included for vacuum testing
- LEDs indicate increasing, decreasing, and stable vacuum



Superheat and Subcooling

SSX34

Measures suction or liquid line pressure and temperature. Automatically calculates and displays real-time superheat or subcooling.

- Charge to superheat and subcooling
- Push button atmospheric pressure calibration
- R-134A, R-404A, R-410A, R-22
- Hands free operation with magnetic hanger
- Displays in °F and °C

Included:

- Thermocouple pipe clamp - TC24



Superheat and Subcooling

ASX14 - Accessory Head

Measures suction line or liquid line pressure and line temperature to calculate and display superheat and subcooling for A/C.

- R-22 or R-410A
- Displays in °F or °C
- Displays pressure in PSI or kPa
- LED indicates stable reading
- Push-button atmospheric pressure calibration

Included:

- Thermocouple pipe clamp - TC24



Charging Jacket for TXV Systems

S365

Charge A/C systems year round.

- Charge TXV systems when outdoor temperature is 37°F to 70°F
- Pressures stabilize quickly during setup
- Service maintenance contracts before and after the summer heat



IR Pocket Thermometer with LED Flashlight

SIL2

Great accuracy and a built-in LED flashlight.

- 1:1 field of view
- Automatic data hold
- Select °F or °C



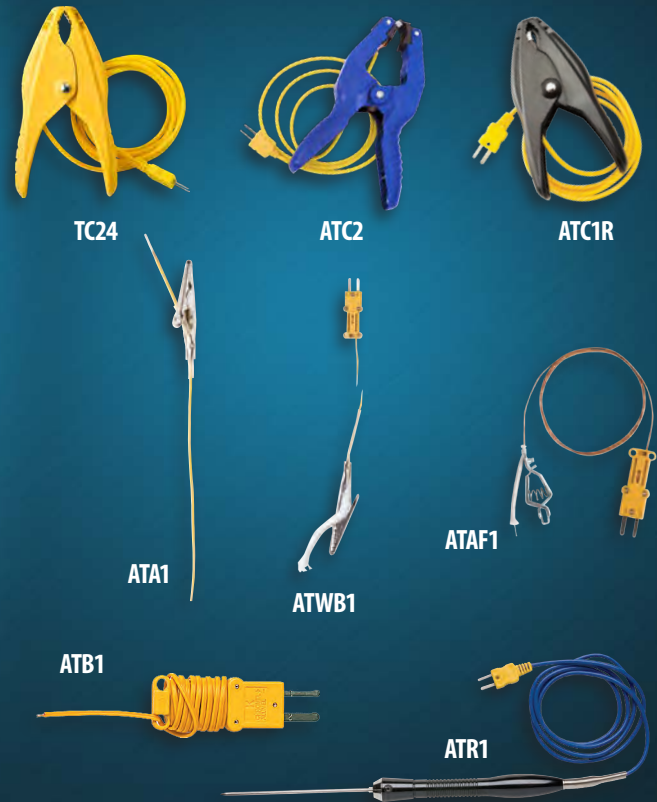
Digital Pocket Psychrometer

PRH2

Everyday measurements at your fingertips.

- Wet bulb, dry bulb, dew point, %RH
- Quick walk-around measurements
- Easy in duct readings
- Helps calculate target superheat

All Fieldpiece thermocouples work with Fieldpiece meters that take temperature.



Model	Description	MAX° F PROBE TEMP
ATBI	Bead type standard	400
ATAI	Bead type with alligator	400
ATAFI	HI-temp bead type with alligator	900
ATWBI	Wet bulb (sock) with alligator	200
ATCIR	Pipe clamp-refrig. (1/8-to 3/4")	257
TC24	Fast Reacting Pipe clamp-Temp. (3/8-to 1 3/8")	257
ATC2	Pipe clamp (up to 2 1/4")	180
ATEXT10	10' extension cables	400
ATRI	4.5- piercing rod with handle	1500

