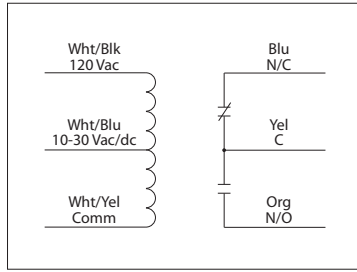


## 10 AMP PILOT CONTROL RELAYS

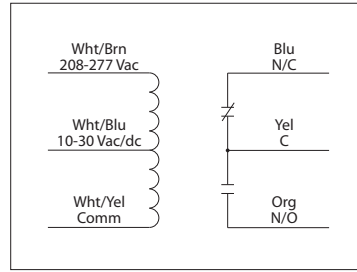
### RIBU1C

Enclosed Relay 10 Amp SPDT with 10-30 Vac/dc/120 Vac Coil



### RIBH1C

Enclosed Relay 10 Amp SPDT with 10-30 Vac/dc/208-277 Vac Coil



**RIBU1C-RD**  
**RIBH1C-RD**  
• Red housing

**RIBU1C-N4**  
**RIBH1C-N4**  
• NEMA 4X housing, UL508 only

## SPECIFICATIONS

**# Relays & Contact Type:** One (1) SPDT Continuous Duty Coil  
**Expected Relay Life:** 10 million cycles minimum mechanical  
**Operating Temperature:** -30 to 140° F  
**Humidity Range:** 5 to 95% (noncondensing)  
**Operate Time:** 20ms  
**Relay Status:** LED On = Activated  
**Dimensions:** 1.70" x 2.80" x 1.50" with .50" NPT nipple  
**Wires:** 16", 600V Rated  
**Approvals:** UL Listed, UL916, UL864, C-UL  
 California State Fire Marshal, CE, RoHS  
**Housing Rating:** UL Accepted for Use in Plenum, NEMA 1  
**Gold Flash:** Yes  
**Override Switch:** No

**Contact Ratings:**  
 10 Amp Resistive @ 277 Vac  
 10 Amp Resistive @ 28 Vdc  
 480 VA Pilot Duty @ 240-277 Vac  
 480 VA Ballast @ 277 Vac  
*Not rated for Electronic Ballast*  
 600 Watt Tungsten @ 120 Vac (N/O)  
 240 Watt Tungsten @ 120 Vac (N/C)  
 1/3 HP @ 120-240 Vac (N/O)  
 1/6 HP @ 120-240 Vac (N/C)  
 1/4 HP @ 277 Vac (N/O)  
 1/8 HP @ 277 Vac (N/C)

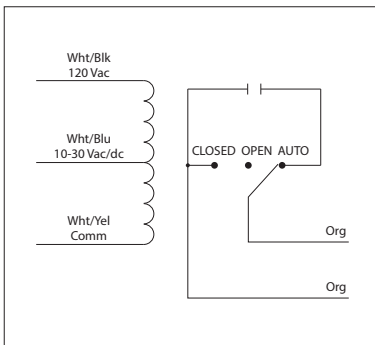
**Coil Current:**  
 33 mA @ 10 Vac      13 mA @ 10 Vdc  
 35 mA @ 12 Vac      15 mA @ 12 Vdc  
 46 mA @ 24 Vac      18 mA @ 24 Vdc  
 55 mA @ 30 Vac      20 mA @ 30 Vdc  
 28 mA @ 120 Vac (RIBU1C)  
 39 mA @ 208-277 Vac (RIBH1C)

**Coil Voltage Input:**  
 10-30 Vac/dc; 120 Vac; 50-60 Hz (RIBU1C)  
 10-30 Vac/dc; 208-277 Vac; 50-60 Hz (RIBH1C)  
 Drop Out = 2.1 Vac / 2.8 Vdc  
 Pull In = 9 Vac / 10 Vdc

## 10 AMP PILOT CONTROL RELAYS

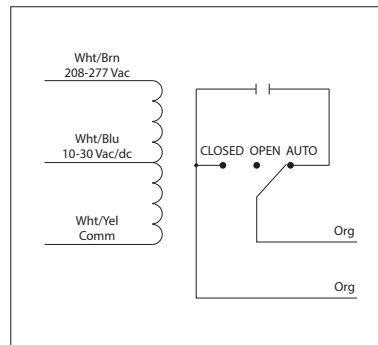
### RIBU1S

Enclosed Relay 10 Amp SPST-N/O + Override with 10-30 Vac/dc/120 Vac Coil



### RIBH1S

Enclosed Relay 10 Amp SPST-N/O + Override with 10-30 Vac/dc/208-277 Vac Coil



## SPECIFICATIONS

**# Relays & Contact Type:** One (1) SPST Continuous Duty Coil  
**Expected Relay Life:** 10 million cycles minimum mechanical  
**Operating Temperature:** -30 to 140° F  
**Humidity Range:** 5 to 95% (noncondensing)  
**Operate Time:** 20ms  
**Relay Status:** LED On = Activated  
**Dimensions:** 2.30" x 3.20" x 1.80" with .50" NPT nipple  
**Wires:** 16", 600V Rated  
**Approvals:** UL Listed, UL916, UL864, C-UL  
 California State Fire Marshal, CE, RoHS  
**Housing Rating:** UL Accepted for Use in Plenum, NEMA 1  
**Gold Flash:** Yes  
**Override Switch:** Yes

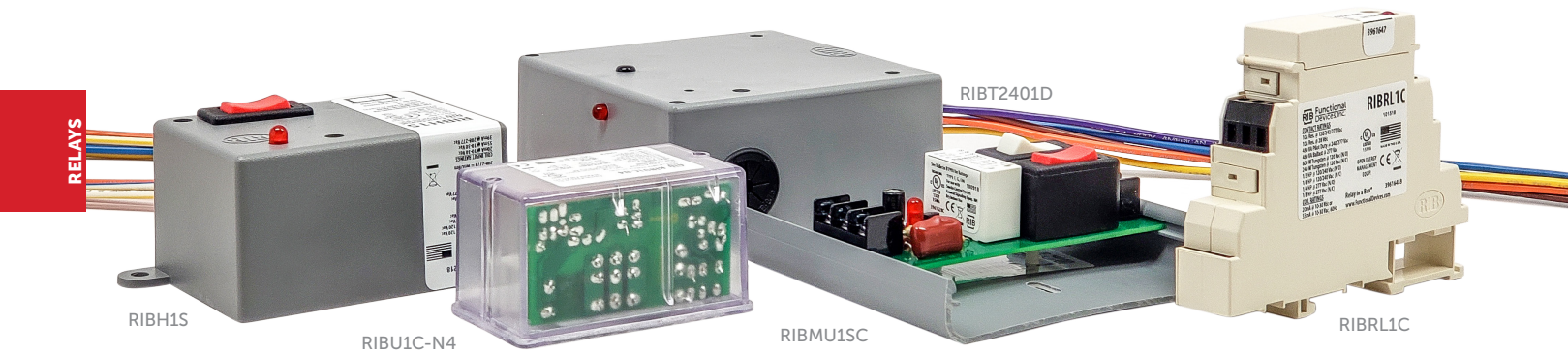
**Contact Ratings:**  
 10 Amp Resistive @ 277 Vac  
 480 VA Pilot Duty @ 277 Vac  
 480 VA Ballast @ 277 Vac  
*Not rated for Electronic Ballast*  
 600 Watt Tungsten @ 120 Vac (N/O)  
 240 Watt Tungsten @ 120 Vac (N/C)  
 1/3 HP @ 120-240 Vac (N/O)  
 1/6 HP @ 120-240 Vac (N/C)  
 1/4 HP @ 277 Vac (N/O)  
 1/8 HP @ 277 Vac (N/C)

**Coil Current:**  
 33 mA @ 10 Vac      13 mA @ 10 Vdc  
 35 mA @ 12 Vac      15 mA @ 12 Vdc  
 46 mA @ 24 Vac      18 mA @ 24 Vdc  
 55 mA @ 30 Vac      20 mA @ 30 Vdc  
 28 mA @ 120 Vac (RIBU1S)  
 39 mA @ 208-277 Vac (RIBH1S)

**Notes:**  
 • Order Normally Closed by adding "-NC" to end of model number

**Coil Voltage Input:**  
 10-30 Vac/dc; 120 Vac; 50-60 Hz (RIBU1S)  
 10-30 Vac/dc; 208-277 Vac; 50-60 Hz (RIBH1S)  
 Drop Out = 2.1 Vac / 2.8 Vdc  
 Pull In = 9 Vac / 10 Vdc

# PILOT RELAYS: 10–15 AMPS



## Convenient Prepackaging is a Great Time Saver

- LED indicator
- Multiple contact ratings
- Override / HOA switch options available
- High/low voltage separation available
- 10-15 Amp models
- Pre-wired
- Enclosed or track mount
- Time delay models



## ENCLOSED PILOT RELAYS

Product Selection Guide. For full product information, see our website.

MODEL #	UL	COIL VOLTAGE		RELAY CONTACTS	CONTACT RATINGS			HIGH/LOW SEPARATION	OVERRIDE SWITCH	HOUSING STYLE *	SHIPPING WEIGHT
		AC/DC	AC		RESISTIVE	MOTOR	PILOT DUTY				
RIBU1C	•	10-30	120	1 SPDT	10 A @ 277 Vac	1/3 HP @ 120-240 Vac (N/O)	480 VA @ 240-277 Vac			A	0.300 lb.
RIBH1C	•	10-30	208-277	1 SPDT	10 A @ 277 Vac	1/3 HP @ 120-240 Vac (N/O)	480 VA @ 240-277 Vac			A	0.302 lb.
RIBU2C	•	10-30	120	2 SPDT	10 A @ 277 Vac	1/3 HP @ 120-240 Vac (N/O)	480 VA @ 240-277 Vac			B	0.507 lb.
RIBH2C	•	10-30	208-277	2 SPDT	10 A @ 277 Vac	1/3 HP @ 120-240 Vac (N/O)	480 VA @ 240-277 Vac			B	0.528 lb.
RIBL3C	•	10-30		3 SPST	10 A @ 277 Vac	1/3 HP @ 120-240 Vac (N/O)	480 VA @ 240-277 Vac	•		C	0.742 lb.
RIBL4C	•	10-30		3 SPST, 1 SPDT	10 A @ 277 Vac	1/3 HP @ 120-240 Vac (N/O)	480 VA @ 240-277 Vac	•		C	0.890 lb.
RIBU1S	•	10-30	120	1 SPST	10 A @ 277 Vac	1/3 HP @ 120-240 Vac (N/O)	480 VA @ 277 Vac		1	B	0.404 lb.
RIBH1S	•	10-30	208-277	1 SPST	10 A @ 277 Vac	1/3 HP @ 120-240 Vac (N/O)	480 VA @ 277 Vac		1	B	0.410 lb.
RIBU1SM-250	•	10-30	120	1 SPST	10 A @ 120/250 Vac	1/3 HP @ 120-240 Vac (N/O)	345 VA @ 120/240 Vac		1+monitor	B	0.472 lb.
RIBH1SM-250	•	10-30	208-277	1 SPST	10 A @ 120/250 Vac	1/3 HP @ 120-240 Vac (N/O)	345 VA @ 120/240 Vac		1+monitor	B	0.520 lb.
RIB2401D	•	24	120	1 DPDT	10 A @ 277 Vac	1/2 HP @ 120/240 Vac (N/O)	B300			A	0.336 lb.
RIB2402D	•	24	208-277	1 DPDT	10 A @ 277 Vac	1/2 HP @ 120/240 Vac (N/O)	B300			A	0.350 lb.
RIBU1SC	•	10-30	120	1 SPDT	10 A @ 277 Vac	1/3 HP @ 120-240 Vac (N/O)	480 VA @ 277 Vac		2 +	B	0.445 lb.
RIBH1SC	•	10-30	208-277	1 SPDT	10 A @ 277 Vac	1/3 HP @ 120-240 Vac (N/O)	480 VA @ 277 Vac		2 +	B	0.447 lb.
RIBL1C-DC	•	10-30 Vdc only		1 SPDT	10 A @ 277 Vac	1/3 HP @ 120-240 Vac (N/O)	480 VA @ 240-277 Vac			A	0.285 lb.
RIB2421C	•	24	120-277	1 SPDT	10 A @ 277 Vac	1 HP @ 250 Vac	C300			A	0.301 lb.
RIBD2421C ~	•	24	120-277	1 SPDT	10 A @ 277 Vac	1 HP @ 250 Vac	C300	•		C	0.642 lb.
RIBU2SC	•	10-30	120	1 SPST, 1 SPDT	10 A @ 277 Vac	1/3 HP @ 120-240 Vac (N/O)	480 VA @ 277 Vac		1	B	0.526 lb.
RIBU2S2	•	10-30	120	2 SPST	10 A @ 277 Vac	1/3 HP @ 120-240 Vac (N/O)	480 VA @ 277 Vac	•	2	C	0.735 lb.

UL = UL Listed : UL916 Energy Management, UL864 Fire ; USA & Canada

\* = See Housing Guide on pages 86-87

~ = Time Delay

+ = SPDT with override requires 2 switches

# = Coil side relay override (requires unit to be powered)

For full product information, see data sheets on website. Shipping weights are approximate and may change due to packaging options.