

© 2007 COX ENGINEERING DBA CAMBRIDGEPORT AIR SYSTEMS. THE INFORMATION CONTAINED IN THIS DOCUMENT IS PROPRIETARY TO COX ENGINEERING COMPANY DBA CAMBRIDGEPORT AIR SYSTEMS. THIS DOCUMENT OR THE INFORMATION CONTAINED IN WHOLE OR IN PART MAY NOT BE ISSUED TO ANOTHER PARTY WITHOUT WRITTEN CONSENT AND AUTHORIZATION FROM CAMBRIDGEPORT.

Approval Block

Date: _____
 Company: _____
 Job Name: _____
 Approved By: _____
 Notes: _____

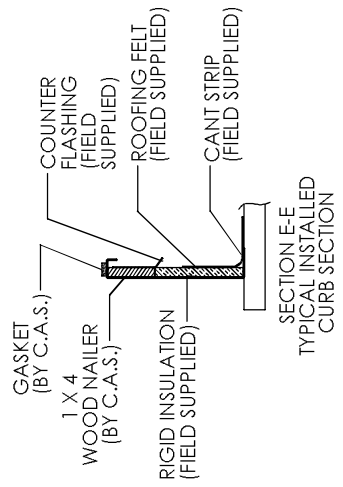
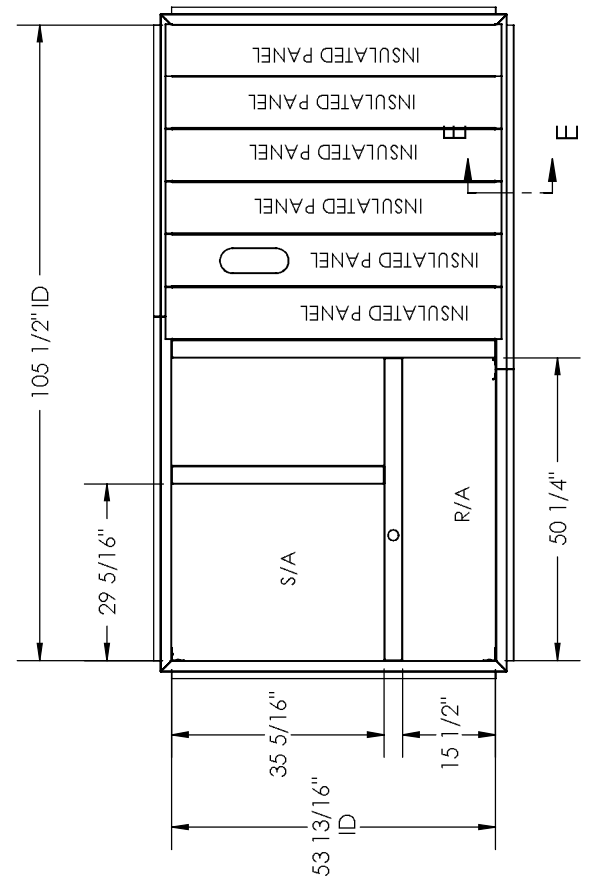
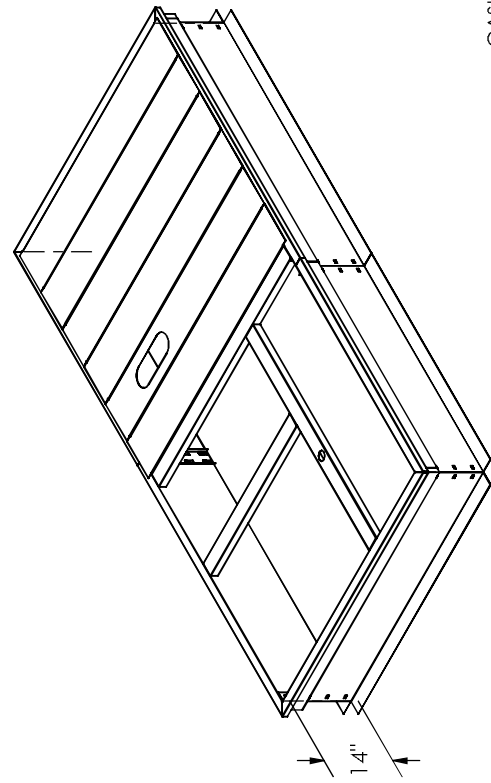
**SURE LOCK
 ROOF CURB #
 SUBMITTAL #
 1017037**

CARRIER 74A

1017037

Drawn Date: 2/3/2011 Rev.
 Drawn By: RTO

Estimated Weight: 162 LBS.



FEATURES:

1. Mitered Corners.
2. Gasketing Provided for Unit to Curb Sealing.
3. Roof Curb is Fabricated of Heavy Gauge Galvanized Steel.
4. Full Perimeter Wood Nailer.
5. Pre-Punched Holes and Hardware Included for Curb Assembly.
6. Roof Curb is Shipped Knocked Down.
7. Roof Curb is Labeled with RTU # if Applicable.

Cambridgeport

NORTH
 8 Fanaras Drive
 Salisbury Industrial Park
 Salisbury MA 01952
 1-800-648-2872
 1-877-648-2872

SOUTH
 3529 Lamar Ave.
 Lamar Industrial park
 Memphis TN 38118
 1-800-648-2872

HVAC Accessories & Engineered Systems