



i-Vu® Building Automation System i-Vu® Trends and Reports



United Technologies

The i-Vu® Building Automation System provides everything you need to access, manage, and control your building, including the powerful i-Vu user interface, plug-and-play BACnet® controllers, and state-of-the-art Carrier equipment.

Automatic Trends and Powerful Reports

i-Vu's automatic trending capabilities mean that a history of your equipment's operation is being saved without any special setup. Trends can be easily modified to sample at different time intervals or on change of value instead.

Turn trend data into interactive, graphical reports using i-Vu's reporting capabilities. Reports can be scheduled to run automatically, sent to e-mail recipients and stored in multiple file formats.

i-Vu Trends

Viewing trends is effortless with i-Vu. Simply point and click to a piece of equipment in the navigation tree, and you will be presented with a comprehensive list of trend points that are already enabled. Pick any point to view the trend graph. While viewing the trend graph, there are many tools at your disposal:

- Use arrow keys to pan the trend graph in different directions.
- Draw a rectangle around a specific area to zoom-in on that data.
- Use the Page Down key to

zoom-out on specific trend data.

- Enter a specific start date to jump to the trend graph for that date.
- Show point markers for each data point in the graph.
- Copy the trend graph data that is being displayed on the screen and paste it into Excel.

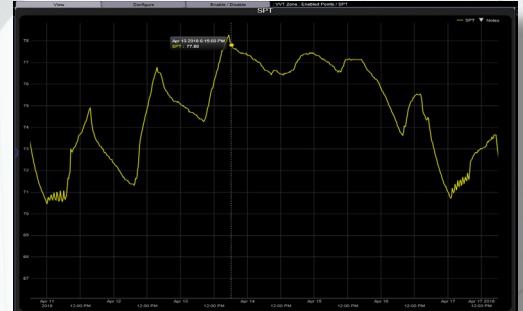
You can also graph multiple trend points simultaneously to help monitor and troubleshoot your system. A comparison trend graph can display up to four graphs on the same page.

i-Vu Reports

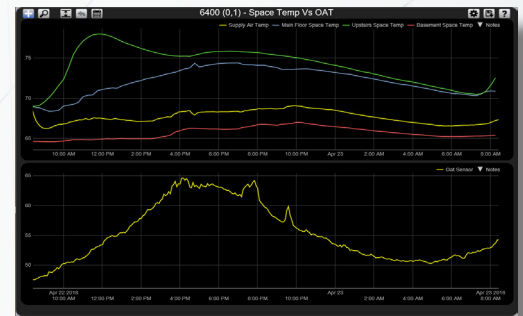
The i-Vu system includes standard reports that provide insight on equipment status and users of the system. Security, alarms, schedules, equipment and commissioning reports can be viewed and printed. i-Vu Plus and Pro systems also include custom reporting capabilities. Reports can be created, edited, viewed, and scheduled using the Report Manager tool. Easily create reports for energy usage, system status, historical data, and much more. The Report Manager also supports

Java math functions to perform calculations on column data, allowing for easy creation of reports based on calculated data. Some examples include:

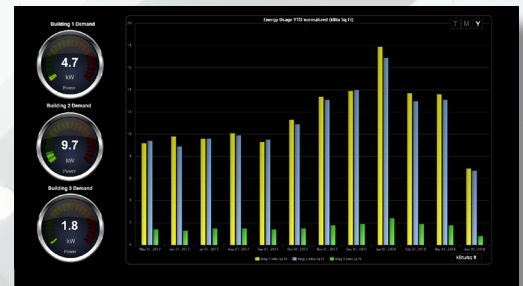
- BTU calculations from flow and delta temperature measurements
- Normalized energy usage
- Aggregate consumption
- Min/Max/Average values



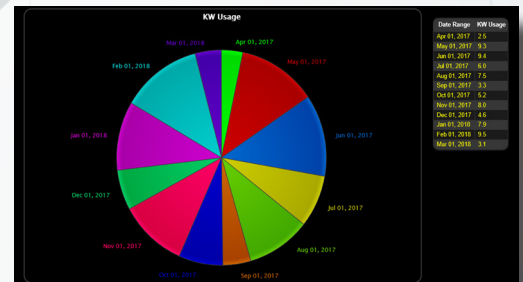
Trend Sample



Multiple Trend Samples



Reports - Bar Chart



Reports - Pie Chart



CONTROLS EXPERT

Tested. Certified. Factory Authorized.

For more information, contact
your local Carrier Controls Expert.
Controls Expert Locator:
www.carrier.com/controls-experts

© Carrier Corporation 2018 Cat. No. 11-808-373-01 Rev. 05/18
Manufacturer reserves the right to discontinue, or change at any time, specifications or designs, without notice and without incurring obligations. Trademarks are properties of their respective companies and are hereby acknowledged.