



# i-Vu® Building Automation System i-Vu® Scheduling



*The i-Vu® Building Automation System provides everything you need to access, manage, and control your building, including the powerful i-Vu user interface, plug-and-play BACnet controllers, and state-of-the-art Carrier equipment.*

## Area Scheduling

Scheduling your Carrier system is a breeze with i-Vu's intuitive scheduling interface. Simply point and click in i-Vu's navigation tree to enter schedules at the building, area, or zone level:

- Schedules added at the building level affect all equipment in the building.

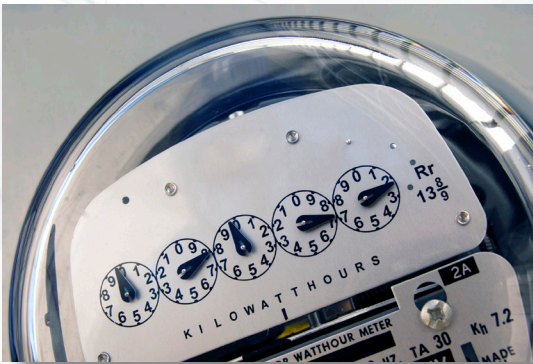
- Schedules added at an area level affect all pieces of equipment in that area.
- Schedules added at a zone level affects only the equipment in that zone.
- Define schedule groups for even greater flexibility. When you apply a schedule to a schedule group, the schedule affects all pieces of equipment in that group.

## Viewing Schedules

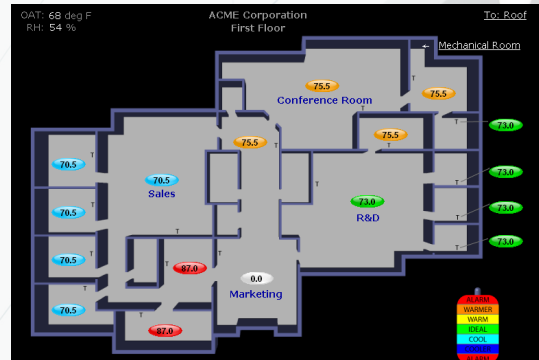
Point and click in the navigation tree, and i-Vu allows you to view the relevant schedules at that level and below. The effective schedules (occupied or unoccupied), and priority schedules (Normal, Holiday, and Override), are all

color-coded for easy viewing on one screen. View schedules for the current week, or rewind/fast forward to see past or future schedules.

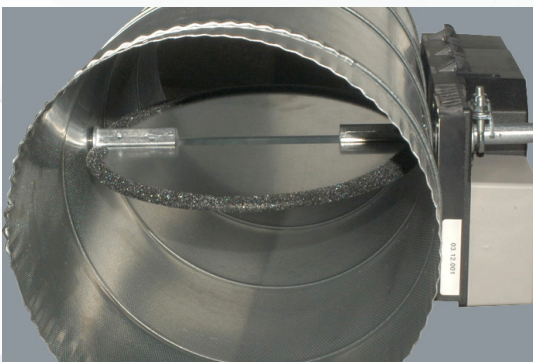
## Conserve Energy



## Area Scheduling



## Effective Control



## Simple & Efficient





# i-Vu® Building Automation System i-Vu® Scheduling

## Creating Schedules

It's simple to add customized schedules to keep occupants comfortable and equipment running efficiently. First select the priority for the schedule that you wish to add (Normal is low priority; Holiday is medium; Override is high). Then select the schedule type that meets your needs:

- Weekly - Every week on the specified days
- Date - On a single, specified date
- Date Range - Between two specified dates
- Date List - On multiple, specified dates

Schedule Instances		
Location: ACME Corporation Run Date: 6/14/2007		
Location	Priority	Description
ACME Corporation	Normal	Weekly Schedule Mon,Tue,Wed,Thu,Fri Occupied from 8:00 AM to 5:00 PM
First Floor		
3V ZONE (0,2)		Member of Group(s): Zone Equipment
3V BYPASS (0,3)		Member of Group(s): Zone Equipment
ComfortID (0,15)		Member of Group(s): Zone Equipment

- Wildcard - According to a repeating pattern
- Continuous - Continuously between specified times on two separate dates
- Dated Weekly - Weekly between a start date and an end date

Then simply drag the start and stop times on the schedule graph to complete the schedule. Once schedules are in the system, they can be easily edited by dragging the start and stop times to change them. You can also delete or print schedules with the click of a button, directly from the same screen.

Schedule Instances		
Location: ACME Corporation Run Date: 6/14/2007		
Location	Priority	Description
ACME Corporation	Normal	Weekly Schedule Mon,Tue,Wed,Thu,Fri Occupied from 8:00 AM to 5:00 PM
First Floor		
3V ZONE (0,2)		Member of Group(s): Zone Equipme
3V BYPASS (0,3)		Member of Group(s): Zone Equipme
ComfortID (0,15)		Member of Group(s): Zone Equipme

## Reports

For added flexibility, i-Vu also supports schedule reports. These reports may be viewed within i-Vu, or they may be exported to .pdf or Excel for easy viewing.

- Schedule Instances - Shows detailed information as to locations, priorities, and other schedule details such as start/stop times, days of week, etc. This report can help you discover newly added and conflicting schedules.

- Effective Schedules - View all equipment that may be scheduled and the net result of all schedules in effect for a selected time and date.



**CONTROLS EXPERT**

Tested. Certified. Factory Authorized.

For more information, contact  
your local Carrier Controls Expert.  
Controls Expert Locator:  
[www.carrier.com/controls-experts](http://www.carrier.com/controls-experts)

© Carrier Corporation 2018 Cat. No. 11-808-372-01 Rev. 05/18  
Manufacturer reserves the right to discontinue, or change at any time, specifications or designs, without notice and without incurring obligations. Trademarks are properties of their respective companies and are hereby acknowledged.